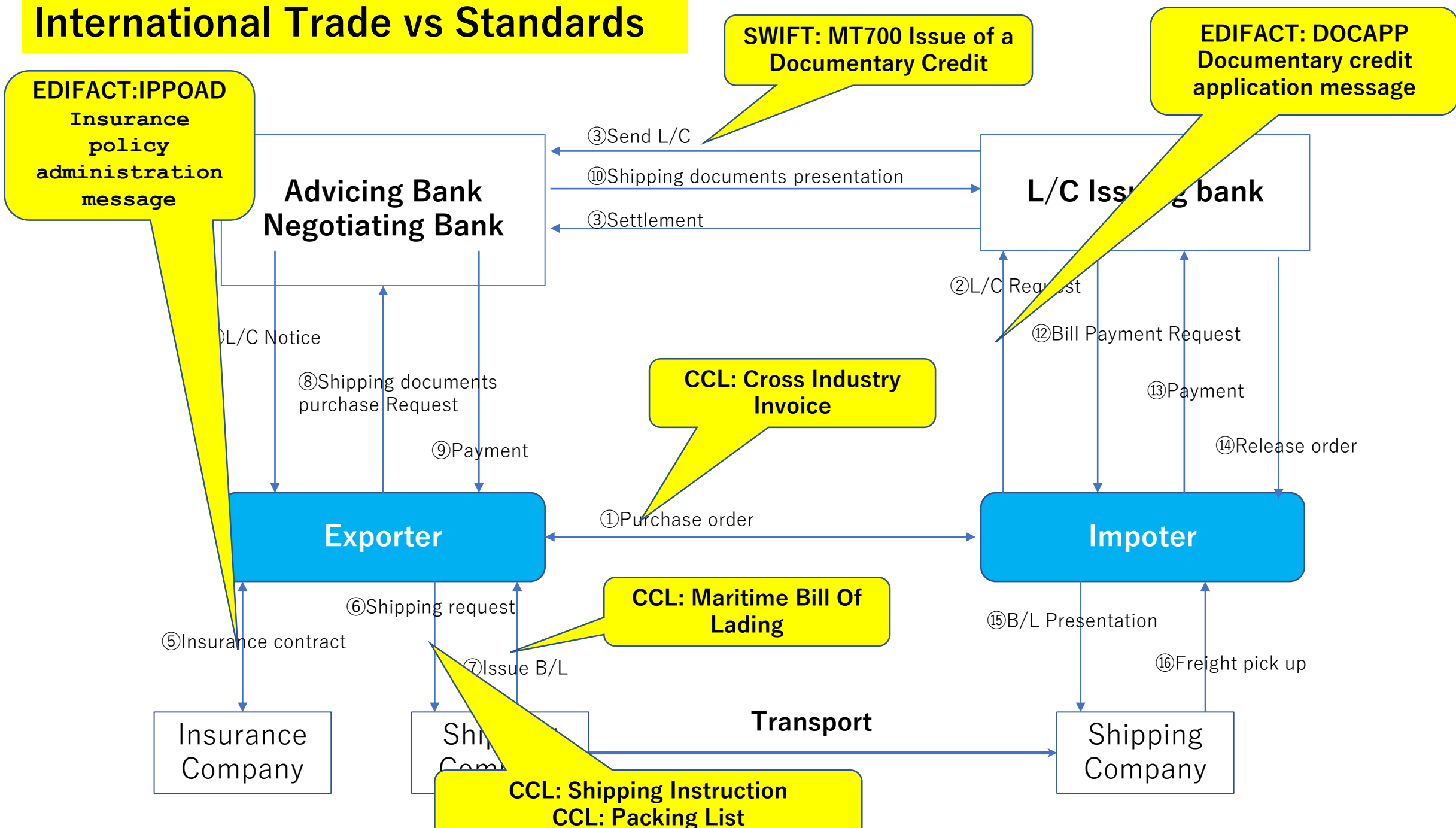


Trade Finance Project

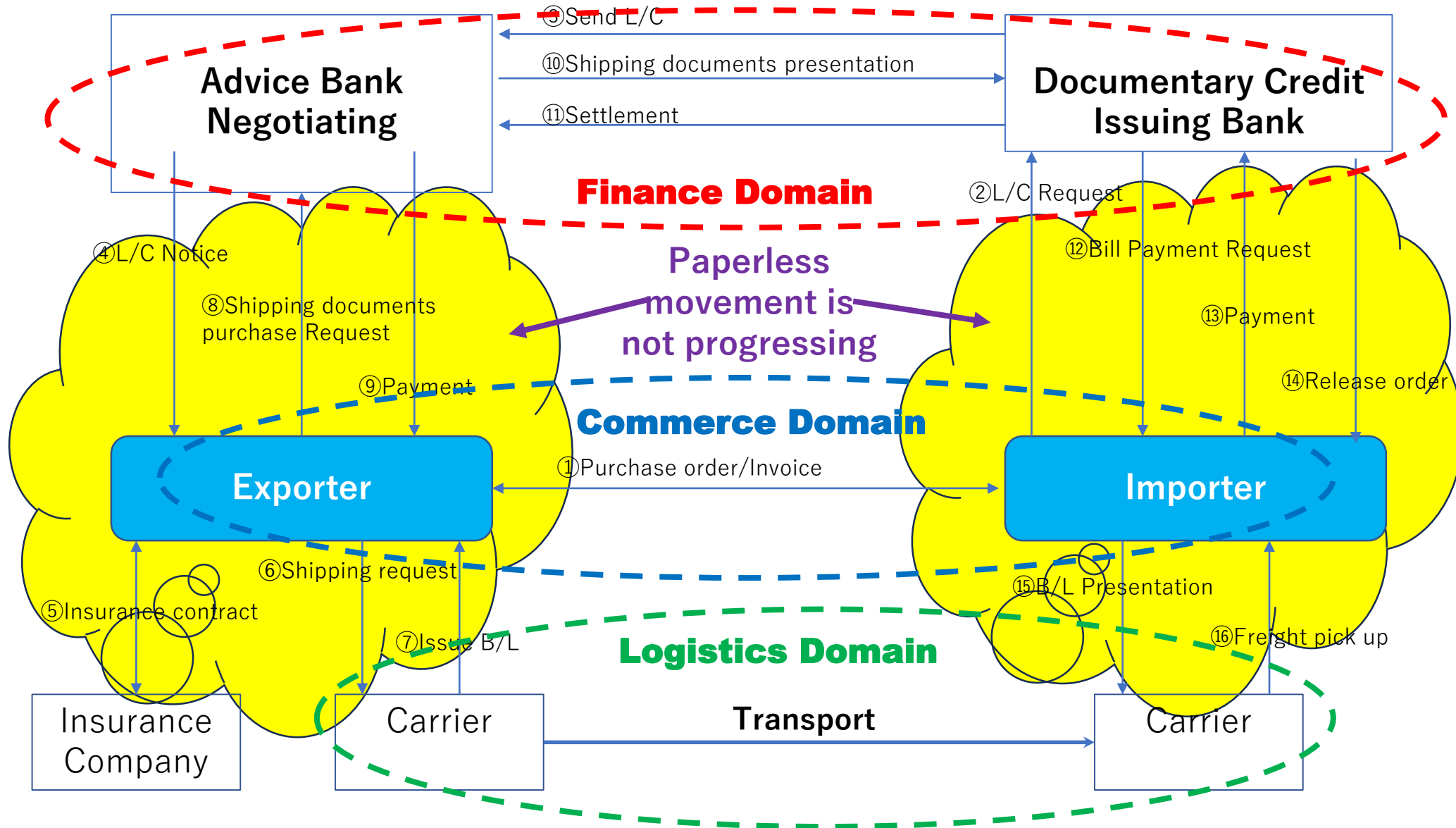
2024-11-26
42 AFACT Plenary

Hisanao Sugamata

International Trade vs Standards



Lack of interoperability in financial, commercial and logistics sectors



Buy/Ship/Pay Data Exchange Structures for Trade Finance Facilitation

Project submitted: 8 February 2023
By Sue Probert and Hanane BECHA

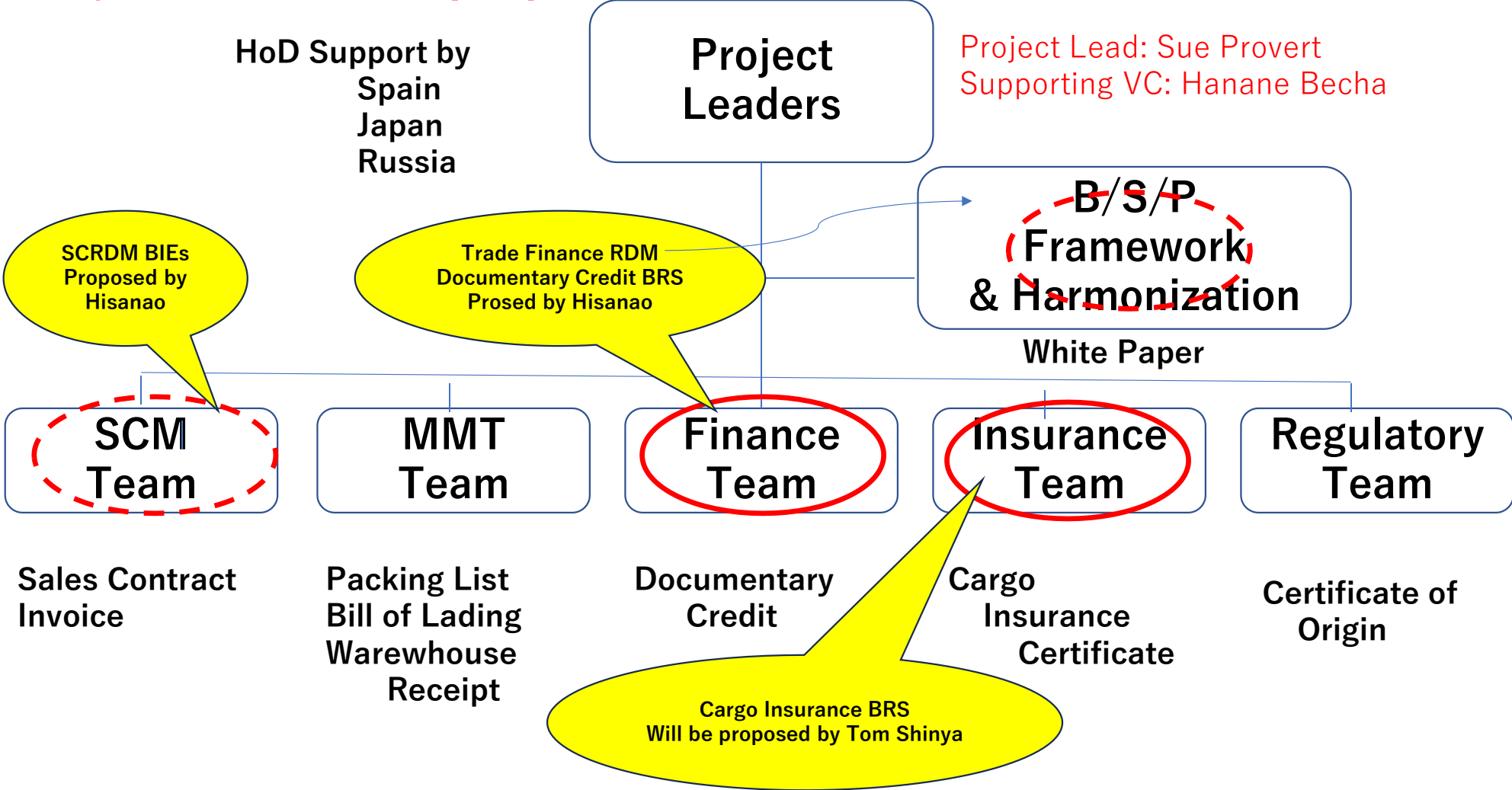
Project Purpose

In order to support the implementation of MLETR for title transfer, this project will develop data exchange structures as subsets of the Buy/Ship/Pay Reference Data Model (BSP RDM) to support key trade finance data exchanges as part of the UNECE “digital and green transformations for sustainable development in the ECE region” strategy.

Project Deliverables

- BRS and eBusiness Standard for Documentary Credit Advice
- BRS and eBusiness Standard for Non-Preferential Certificate of Origin
- BRS and eBusiness Standard for Maritime Cargo Insurance Certificate
- BRS, implementation guideline and CCBDA subset for Warehouse Receipt
- CCBDA Implementation guideline for Trade Finance Subset for Invoice
- CCBDA Implementation guideline for Trade Finance Subset for Packing List
- Trade Finance White Paper

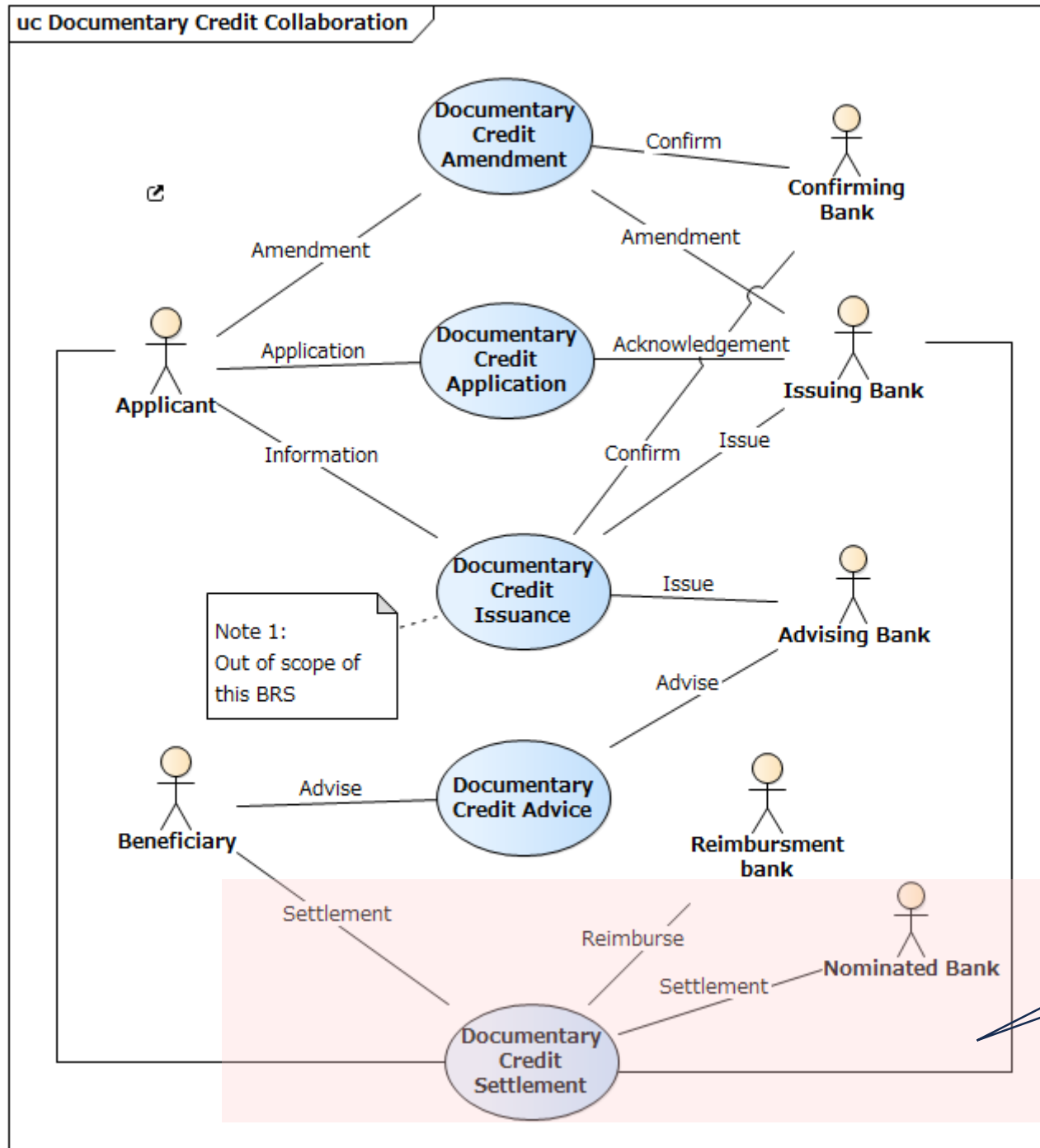
Project Formation proposal



Online Project Meeting: Bi-Weekly

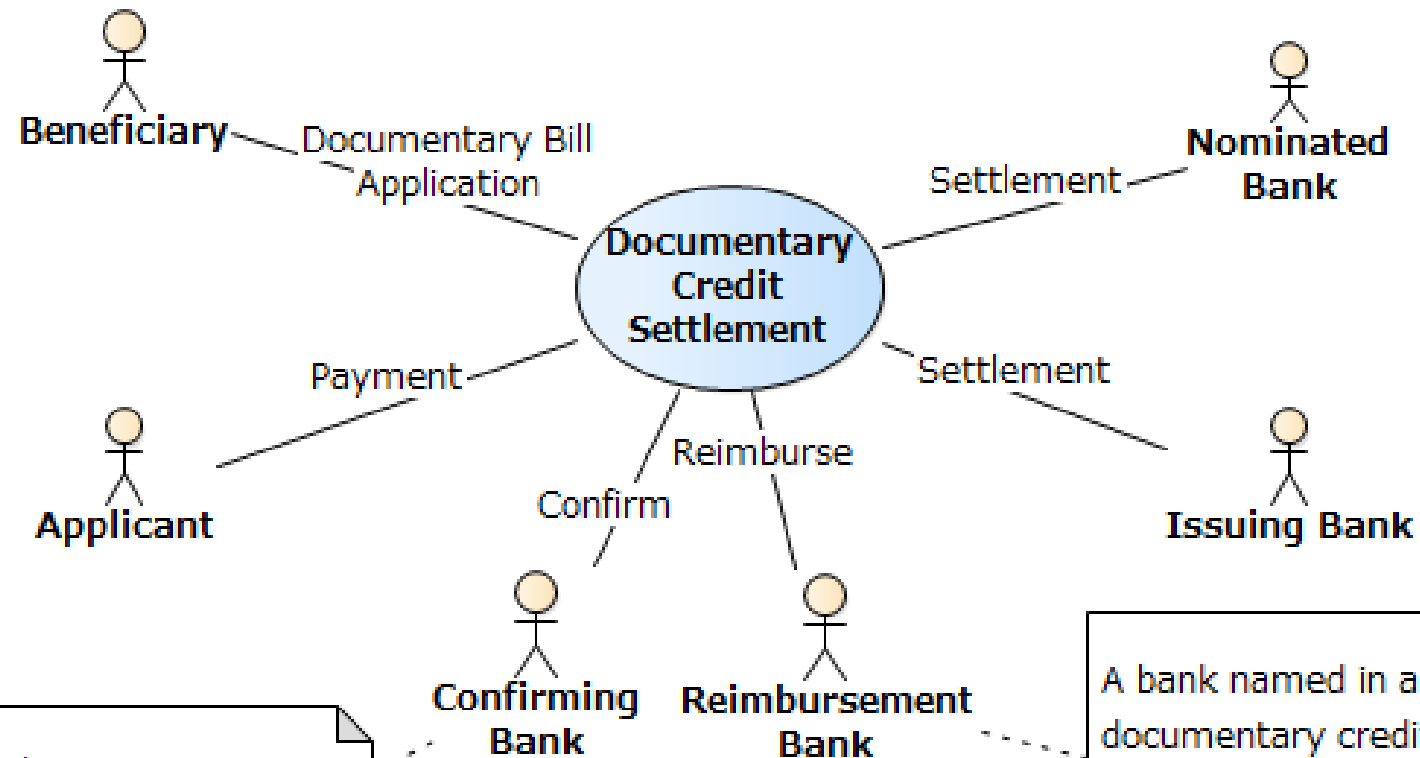
Documentary Credit Settlement (BRS)

As of November/2024: Under development



Documentary Credit Settlement Process

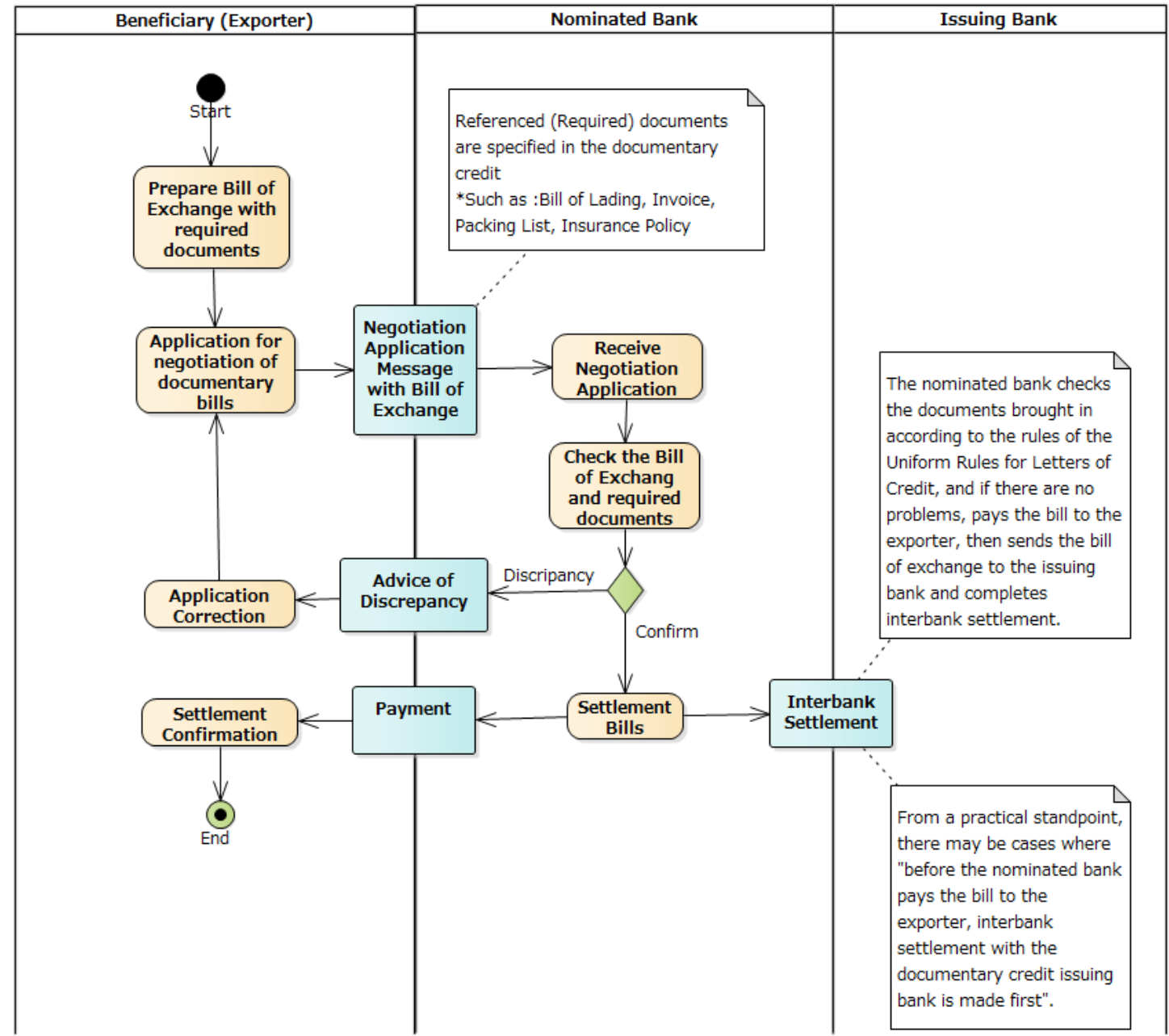
uc Documentary Credit Settlement



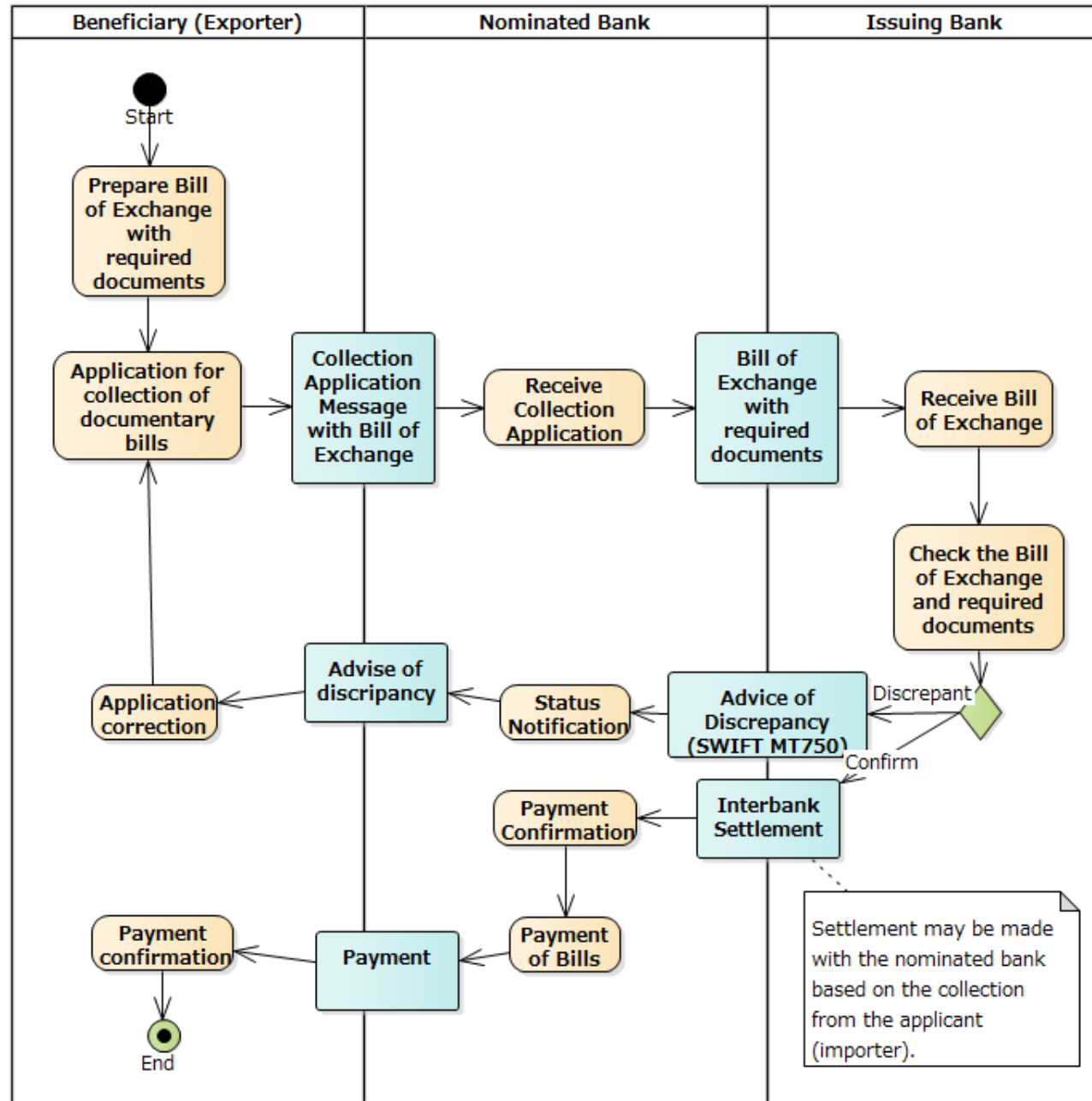
Upon a Compliant Presentation, the Nominated Bank that has decided to intervene or the Confirming Bank that has added its own confirmation must Honour as per request of Documentary Credit.

A bank named in a documentary credit from which the paying, accepting or nominated bank may request cover after receipt of the documents in compliance with the documentary credit.

act Bill of Exchange Application (Negotiation case)



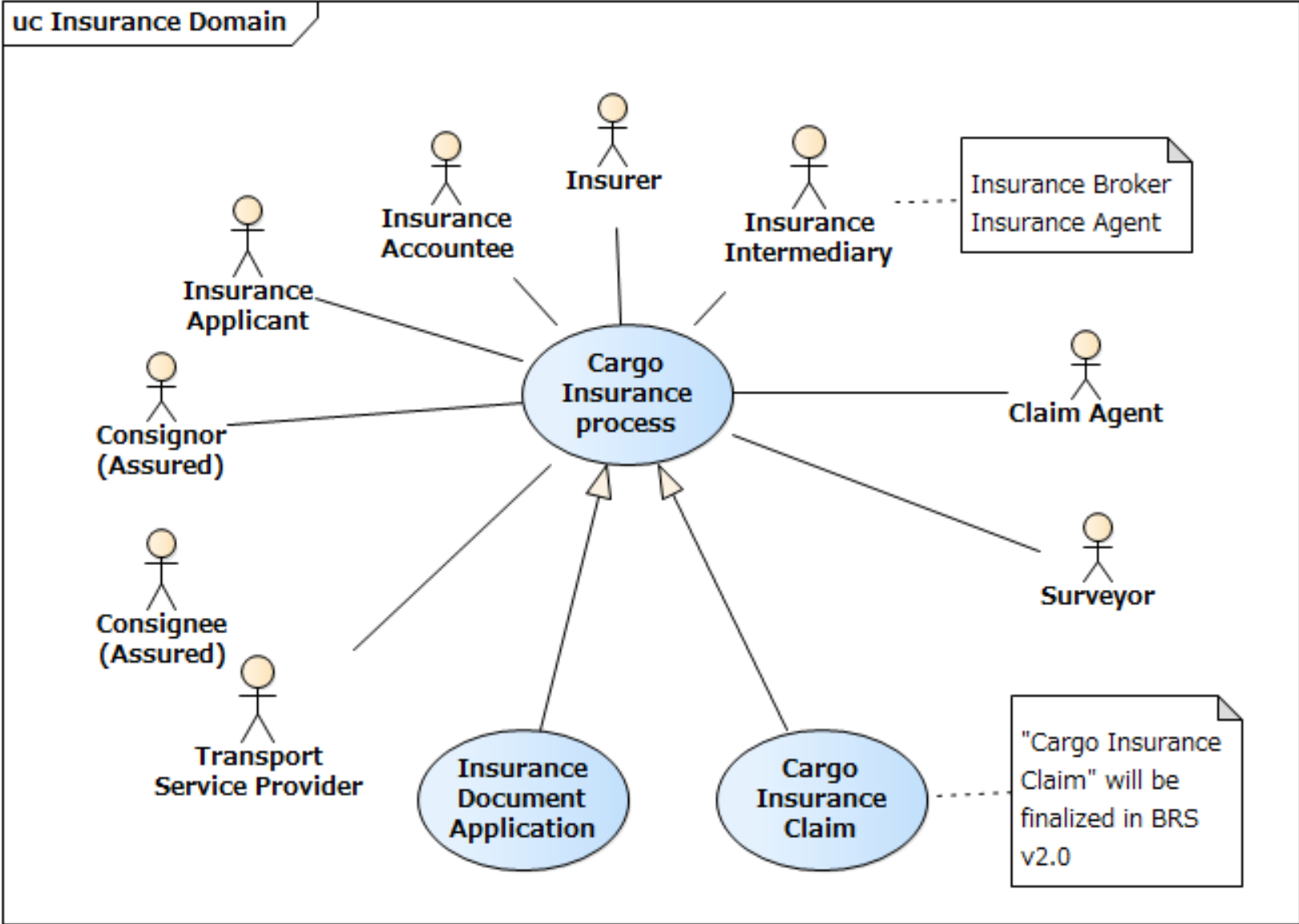
act Bill of Exchange Application (Collection case)



Cargo Insurance (BRS)

As of November/2024: Under Public Review

Cargo Insurance Process: Domain Use Case



Cargo Insurance (Data Model)

